



# InsermTransfert

NURTURING INNOVATION IN HUMAN HEALTH

---

## ABOUT INSERM TRANSFERT

### Mission

Inserm Transfert is Inserm's fully owned subsidiary dedicated to knowledge transfer. We focus on adding value and minimizing risk for innovative projects at pre-industrial stage, bridging discovery and clinical research. We put emphasis on revealing high potential projects, implementing appropriate proof of concept and intellectual property strategies, and striking win-win industrial partnerships.

We provide our R&D partnerships, public health programmes and international R&D consortia, with a dedicated expertise in project design and alliance management.

We care about developing innovation, servicing researchers, and bringing projects to industrial development, thereby creating health, wealth, and jobs.

We strive for preventing diseases and curing patients.

*Inserm Transfert gathers a well-experienced team of women and men that display all the skills and expertise required for innovation transfer to industry. The company is chaired by Mrs. Pascale Augé.*

### Key dates

**2008** Inserm Transfert receives ISO 9001: 2008 certification for intellectual property management activities in biomedical research

**2012** Inserm Transfert Initiative has carried out a €35.5m fund-raising, making it the largest life sciences seed company backed by a French public-sector research organisation

**2010** Inserm Transfert receives ISO 9001: 2008 certification for international project management activities in biomedical research

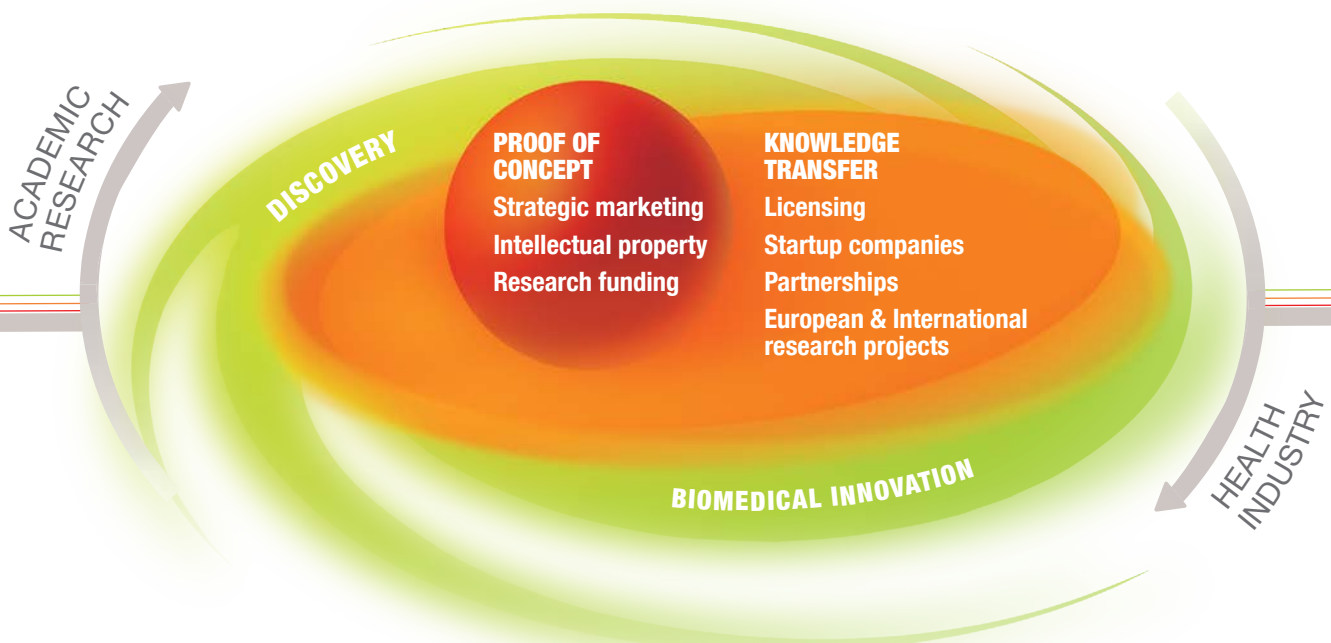
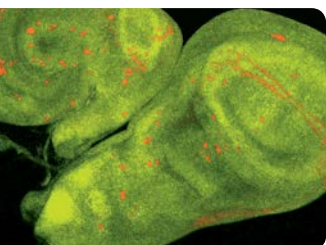
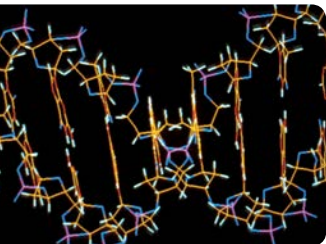
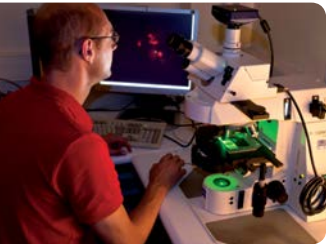
**2009** Inserm sets up a Proof of Concept budget under Inserm Transfert's management

**2006** Inserm mandates Inserm Transfert for all knowledge transfer activities

**2005** Inserm Transfert founds Inserm Transfert Initiative, a seed fund company dedicated to life sciences

**2003** Inserm Transfert launches Programme Management for EC Framework Programme

**2000** Inserm creates Inserm Transfert SA as a private subsidiary focusing on equity investment into spin-offs



## SERVICES

### • Maturation and proof of concept

Discovery results most often need to be further developed before getting transferred to industry. Taking advantage of a dedicated €2m annual budget, we fund and manage R&D, commercial and intellectual property maturation of a selection of projects with highest industrial potential.

### • Intellectual property

Responsible for Inserm's intellectual property strategy and patent portfolio management, we assist researchers daily in protecting their work following international industrial standards. We have developed an in-house expertise that allows us to map out and implement strategies along the whole patent life cycle, from invention disclosure to licensing, and during its operation phase.

### • Industrial partnerships

We feed open innovation strategies of health industries with tailor-made solutions: R&D partnerships, strategic alliances, licensing, start-up creation, consulting...

We propose win-win solutions relying on a comprehensive mapping of state-of-the-art science in our labs, feeding strategic discussions with industry partners.

We work at matching scientific excellence in response to industrial needs, and connecting people in public and private laboratories to foster partnered team spirit.

### • Collaborative projects, consortium and alliance management

We have developed a unique expertise in building, managing, and leading to industrial transfer life sciences research projects within an international, industrial setting, addressing discovery, early translational, and public health concerns.

- **European research projects:**

we assist academic and industry scientists in designing, gathering appropriate funding, managing, and completing their multi-partner projects.

- **Industrial alliance management:**

we provide scientists with project management ensuring timely completion of R&D programmes, delivery of high quality standards results, and strategic follow-up of intellectual property and budgeting issues.

- **Public health:**

we contribute to setting up and managing large-scale projects (e.g. cohorts) in epidemiology and public health, dealing with scientific, financial, regulatory, ethical and legal concerns; we assist in designing, building and following-up adequate innovative partnerships between academic and industry partners.

### • Entrepreneurship

We make aware scientists that have a start up project to the requirement for developing a sustainable and solid business.

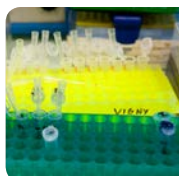
We help them identify their partners in the early steps of their company's inception (incubators, public grants, seed funds including Inserm Transfert Initiative, etc.).

## KEY FACTS

### Yearly achievements\*

€1.8m	proof of concept investment
162	novel patents filings
€30m	income from licensing agreements and R&D partnerships
33	international research projects under management
9	entrepreneurial projects

\* 2013



*Inserm Transfert and Translational Research Informatics Center (Japan) enter into international cooperation agreement regarding translational researches*

### On the market

#### DIAGNOSTICS

• COBAS® AmpliPrep/COBAS® AMPLICOR HIV-1 MONITOR Test	HIV
• AMPLICOR HPV Test	HPV
• HPV Hybrid Capture®	HPV
• 9 DNA tests	rare diseases
• SMA DNA test	spinal muscular atrophy

#### THERAPEUTICS

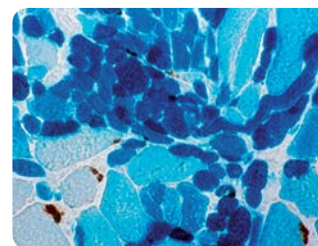
• Tiorfan®	anti-diarrheal
• Promacta®	chronic idiopathic thrombocytopenic purpura
• Catena®	Friedreich's ataxia
• Ablatherm® HIFU	localised prostate cancer
• ESWL Sonolith®	localised prostate cancer

#### VACCINES

• Engerix B®	hepatitis B
• Genhevac B®	hepatitis B

#### ANIMAL MODELS

• K/BxN mouse	arthritis
---------------	-----------



### Some of our spin-offs

- AAVLIFE
- Enyo Pharma
- Graftys
- Inotrem
- Aelis Farma
- Eyevensys
- Hybrigenics
- Sensorion Pharmaceuticals
- DNA Therapeutics
- Fovea Pharmaceuticals
- Innate Pharma
- ScreenCell
- Effimune
- GenOway
- IntegraGen
- TxCell

## ABOUT INSERM



Cancer



Cell biology,  
development  
and evolution



Circulation,  
métabolism,  
and nutrition



Genetics,  
genomics  
and bioinformatics



Health  
technologies



Immunology,  
hematology,  
pneumology



Microbiology  
and infectious  
diseases



Molecular and  
structural bases  
of living organisms



Neurosciences,  
cognitive sciences,  
neurology and psychiatry



Public health

### Mission

Inserm is the French public research institute focusing entirely on human health with ability to conduct translational research from lab bench to patient bedside. Inserm is committed to studying all diseases, whether common or rare, through discovery, preclinical, clinical and public health research and expertise.

Since 2009, Inserm has been instrumental in the creation, development and coordination of Aviesan, the French National Alliance for Life and Health Sciences, gathering national institutions, universities and hospitals. In partnership with Ariis, its private counterpart representing health industries, Aviesan is responsible for the strategic programming of the national research effort in the sector.



Scientific excellence

Dialogue with society

International cooperation

*In 2014, Inserm celebrates the 50<sup>th</sup> anniversary of its inception.*

### Key facts\*



Prof. Stanislas Dehaene  
2013 Inserm Grand Prix

€972m budget

2,153 scientists

2,887 engineers  
and technicians

291 research units

54 clinical research centres

9,727 publications

1,151 patent families

\* 2013

INSERM TRANSFERT  
Paris Biopark  
7 rue Watt  
75013 PARIS  
FRANCE

Phone +33 (0)1 55 03 01 00  
Fax +33 (0)1 55 03 01 60

[contact@inserm-transfert.fr](mailto:contact@inserm-transfert.fr)  
[www.inserm-transfert.fr](http://www.inserm-transfert.fr)

**Inserm**Transfert